

**INNER CIRCLE – ALUMNI OF  
GLOBAL CAREER COUNSELLOR**

**GLOBAL CAREER  
COUNSELLOR  
CERTIFICATION**

# **BLACK BELT**

**MEMBERSHIP**

# 3

## STAGES OF BECOMING A REPUTED COUNSELLOR

### **PASSIONATE & INTERESTED PROFESSIONALS**

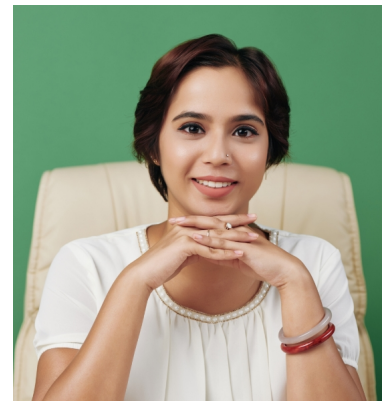
- Teachers guiding on subject-related matters
- Corporate trainers providing real-time career advice
- Doctors guiding clients/kids/relatives about a career in Medicine
- Individuals guiding students in society with self-taught skills and knowledge



# 1

### **GREEN BELT CERTIFIED CAREER COUNSELLORS**

- Equipped with a structured form of training
- Backed with the latest industry insights
- Have access to guidance tools and resources
- Holding an international reputation



# 2

### **BLACK BELT MEMBERS**

- Green Belt Certified Counsellors
- Industry leaders & mentors
- Subject matter experts
- Known for noteworthy contributions
- Recognised In The Education And Counselling Industry



# 3

# AREAS OF BLACK BELT EXPERTISE

Experienced professionals are carefully chosen as Black Belts to mentor the community on important topics. These members will participate and organize their activities and sessions within the Inner Circle. Learning amongst members of the Inner Circle include:



## TEST PREPARATION

*Indian and international competitive exams*



## SCHOOL EDUCATION

*School selection, curriculum, grades, exams*



## ENGINEERING & TECHNOLOGY



## MEDICINE & HEALTHCARE



## BUSINESS & ECONOMICS



## IVY LEAGUE COLLEGES



## PROFILE BUILDING



## ALTERNATIVE CAREERS



## NEW AGE CAREERS



## STUDY ABROAD

*US / UK / Canada / Aus / NZ / Sgp / HK*



## STUDY ABROAD



## GAP / DROP YEARS



## STUDY ABROAD

*Non-English Speaking Countries*



## SCHOLARSHIPS



## ARMED FORCES / DEFENSE

# FREQUENTLY ASKED QUESTIONS

## **Q Who can become a Black Belt member?**

Black Belt membership is by invitation only. The minimum eligibility is to complete your Green Belt certification. If you match all points mentioned under Black Belt members on page 1, you can nominate yourself as a Black Belt member and undergo an extensive nomination process, upon which you might or might not be invited to become a Black Belt member.

## **Q Can I pay and become a Black Belt member?**

No, Black Belt membership cannot be purchased. One needs to fall under the eligibility category and undergo a screening process to become a Black Belt member.

## **Q How long does it take to become a Black Belt member?**

Depends on how engaged you are with your fellow members in the Inner Circle, presentation of leadership skills to candidates pursuing the Global Career Counsellor program, professional contributions to the education and counselling industry and more. Typically takes 8 to 12 months to become a Black Belt member.

## **Q What is the role of a Black Belt member?**

Being a Black Belt member means being a mentor to the Green Belt certified counsellors. Conducting LIVE sessions, workshops, sharing tips and tricks, hand-holding and guiding individuals in building their confidence and become a successful career counsellor.

# PERKS FOR BECOMING A BLACK BELT MEMBER



## EXCLUSIVE INVITES

- ✓ Attend training workshops by industry stalwarts
- ✓ Access to exclusive webinars by Univariety's partner institutions
- ✓ Special invites to Univariety events with travel & hospitality
- ✓ First-hand access to Univariety's latest tools & products



## MASSIVE VISIBILITY

- ✓ Feature on Global Career Counsellor's website and social media
- ✓ Mentor 3700+ Green Belt members as a Black Belt Counsellor
- ✓ Connect with 2 Lac+ aspiring counsellors
- ✓ Conduct sessions for 1 Lac+ students and parents on Univariety's platform



## POSTING RIGHTS

- ✓ Interact and engage with Green Belt members directly
- ✓ Share knowledge-based content in the group
- ✓ Conduct LIVE workshop in the Inner Circle once in 3 months

# BLACK BELT MEMBERS



## RITU WASON

*Founder & CEO,  
Educrossroads Consulting,  
Mumbai*

Expertise: **Profile Building**



## PREETIKA SHARMA

*Founder, Dream Ahead  
Pro, Ludhiana*

Expertise: **Engineering &  
Technology**



## NAHIDA COELHO

*Founder, DiscoverU,  
Mumbai*

Expertise: **Alternative  
Careers**



## VISHAL VARIA

*Managing Director,  
Rosary School, Rajkot*

Expertise: **School Education**



## PALAK BEHL

*Recruitment Advisor and  
Marketing, King's College  
London*

Expertise: **Study Abroad - UK**



## PAMELA RAY PAWAR

*Founder, The LearnEd  
Academy, Mumbai*

Expertise: **Business &  
Economics**





**GLOBAL CAREER  
COUNSELLOR  
CERTIFICATION**

**JOIN THE INNER CIRCLE**

<https://www.facebook.com/groups/gccinnercircle>

**FOR MORE INFORMATION**

 [www.globalcareercounsellor.com](http://www.globalcareercounsellor.com)

 [letmeguide@univariety.com](mailto:letmeguide@univariety.com)